

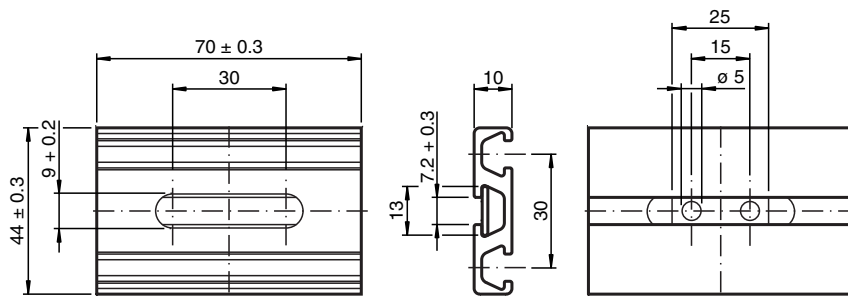


Mounting aid MH 02-L-Y133760

- Suitable for VariKont-L sensors
- Simple and fast mounting
- Sensor can be mounted length or crosswise on the profile section
- Maximum range of adjustment: 60 mm

Mounting aid

Dimensions



Technical Data

Mechanical specifications

Material	Profile rail: aluminum Plate: aluminum
----------	---

Release date: 2020-03-23 Date of issue: 2020-06-29 Filename: 133760_eng.pdf

Refer to "General Notes Relating to Pepperl+Fuchs Product Information".

Pepperl+Fuchs Group
www.pepperl-fuchs.com

USA: +1 330 486 0001
fa-info@us.pepperl-fuchs.com

Germany: +49 621 776 1111
fa-info@de.pepperl-fuchs.com

Singapore: +65 6779 9091
fa-info@sg.pepperl-fuchs.com

PF PEPPERL+FUCHS

Mounting

Instruction for installation

- Insert the M5 slotted cylindrical head screws provided in the sensor base and fix the sliding blocks to them and tighten with approx. 3 turns of the screws
- Slide the loosely attached sliding blocks into the profile section
- Position the sensor and fasten the screws

Scope of delivery

Mounting aid MH 02-L-Y133760, consisting of

- 1 profile rail (70 mm) with elongated hole (30 mm)
- 2 sliding blocks (M5) for sensor mounting
- 2 screws cylindric head (M5 x 42/ISO 4762) for sensor mounting
- 1 aluminium plate (25 x 13 x 1,5) for mounting
- 2 stainless steel self-tapping screw with slot (4,2 x 19/ISO 1481) for mounting
- 2 lock washer (4,3 mm/DIN 6797 form A) for mounting